



20 Capitol Square

Church Street, Epsom, KT17 4NP

£1,600 Per Calendar Month



Thomas & May is delighted to offer this very spacious 2 double bedroom 2 bathroom apartment in the sought after Capitol Square development. Located in Epsom town centre and only a short stroll from the station, this stylish modern apartment also benefits from secure underground parking.

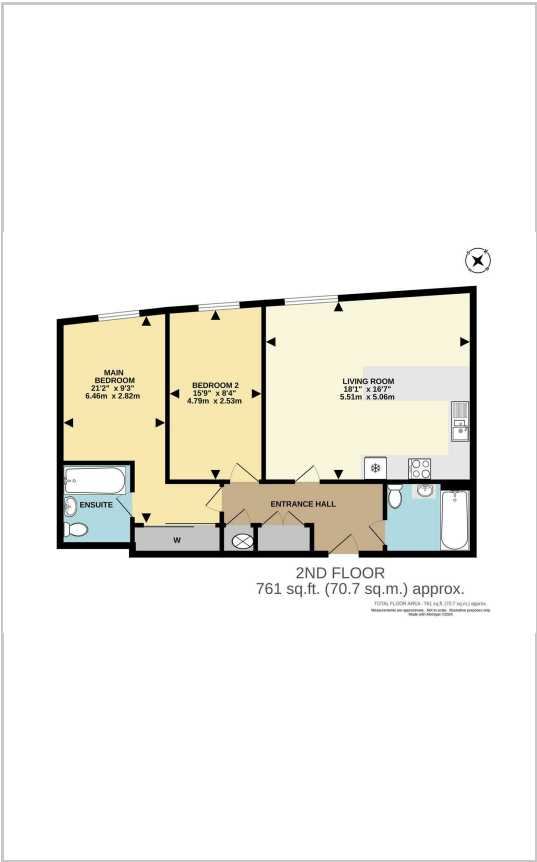


Council Tax D

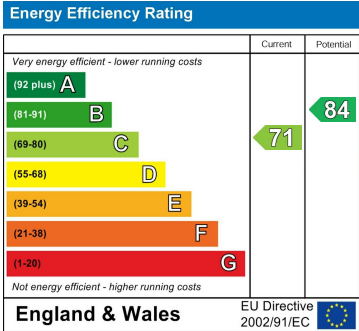
Area Map



Floor Plans



Energy Efficiency Graph



These particulars, whilst believed to be accurate are set out as a general outline only for guidance and do not constitute any part of an offer or contract. Intending purchasers should not rely on them as statements of representation of fact, but must satisfy themselves by inspection or otherwise as to their accuracy. No person in this firms employment has the authority to make or give any representation or warranty in respect of the property.